



## Southern Nuclear Imaging Group

Dr. Phil Monaghan FAANMS, FRACP; Dr. Bob Dickinson FAANMS, FRACP, FRACR;  
A/Prof. George Larcos FRACP, DDU, MPH, FAANMS  
Details: [www.snig.com.au](http://www.snig.com.au)

### In this issue:

1. Scanning **commenced** on the **14th of March 2016** on **Level 7** of **Wollongong Private Hospital**. A new **Illawarra Nuclear Imaging Location** (Southern Nuclear Imaging Group) *By far the best Nuclear Medicine views in more ways than one.*
2. New greatly improved program and user interface for **SNIG Web Based Access to Images**. Now available for viewing on all **Mobile Devices** (IOS [iPhone/iPad/Mac], Android, Windows) and all **Browsers** (inc. Google Chrome and Safari).

## Illawarra Nuclear Imaging: Wollongong Private Hospital

### From Monday 14th of March 2016

Dr Phil Monaghan and his staff at **Southern Nuclear Imaging** are delighted to announce the commencement of a comprehensive nuclear medicine service at **Wollongong Private Hospital** located on **Level 7** in **Suite 705** of this very impressive new facility. (**Note:** 89 Smith Street still open)

As announced previously, we will have a close collaboration with **Dr Glenn and Partners Medical Imaging, your new Radiology Service provider**. The objective is to provide a **one-stop-shop** for all of **your diagnostic medical imaging requirements**. We will be catering for both **inpatient and outpatient referrals** and look forward to continuing to provide the excellent service you have come to respect and enjoy over the past 28 years in **Smith Street Wollongong**.

We have also taken this opportunity to provide a significant upgrade to our equipment. Our commitment to provide a State of the Art service to our referrers and their patients remains unabated. In keeping with this commitment we have installed a new **Hybrid (SPECT/CT) Gamma Camera** and associated advanced **Processing workstations**.



The camera is a **General Electric NMCT 640** and the Processing capability is expanded with the new generation **General Electric Xeleris 3**.



Its next-generation technology delivers on healthcare's most pressing SPECT/CT needs:

- Image quality for outstanding clarity
- Low-dose imaging without compromise
- Acquisition speed that drives efficiency



**Unprecedented clarity and anatomical definition**  
**3D Volume Rendered Images: improved diagnostic confidence; anatomical localisation**

# Image (and report if requested) Availability: New Web Based Portal

Image availability from your **Southern Nuclear Imaging Group** practice has undergone a major renovation and technical upgrades. You will now be able to **view your images and reports** on any Browser and operating system or mobile device.

From our Home Page: [www.snig.com.au](http://www.snig.com.au) **Step 1:** Click on



## NEWS

### Improved Web Based Access to SNIG Images

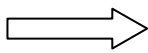
1/13/2016  
Southern Nuclear Imaging have updated their secure Web Based Access to Images (accessed through Doctor's LOG IN from our Home page). The images are now available

## NUCLEAR MEDICINE

Nuclear medicine enables doctors to produce a quick, accurate diagnosis of a wide range of conditions and diseases in a person of any age. This allows the appropriate treatment to begin as early as possible, which means it has a far greater chance of being fully effective. In

## DOCTOR'S LOGIN

Access Southern Nuclear Imaging Group Images and Reports via the Web



### Step 2: Enter your Username and Password

Or go directly to the LOGIN page at:

[remote.snig.com.au](http://remote.snig.com.au)

sword to access the ewing Portal.  
and Password or wish  
:port included please

Practitioner|  
\*\*\*\*\*  
Login

**Hint:** To facilitate easy access place a Hyperlink with the SNIG Logo onto your Desktop.



**Step 3:** Search (if needed) for the required patient and "Open" the folder.



## Patient Online Reporting Portal

[Go to Website](#) [Administration](#) [User Folders](#) [Logout](#)

### List of Patient's folders

Search

#	Patient Folder	Created On	Modified On	Actions
1	1 A LUNG scan Pneumonia-CB110613VQ1_000	12/06/2013 14:11:29	12/06/2013 14:11:29	<a href="#">Open</a>
2	1 AA Bilateral Facet Joint Arthritis CB210912B2_000	23/10/2012 14:34:16	23/10/2012 14:34:17	<a href="#">Open</a>

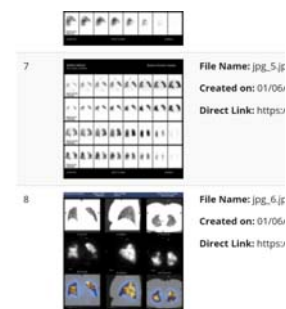
**Step 4:** Then "Open" the required images. Note: You can save images as jpegs if desired.



We can provide the **e-record** to others if requested.

**To Register** or to go to the **Portal** containing your patient's images; **LOGIN** page at: <https://reports.snig.com.au/>

For **technical support** call **Gary** on 0418763528.



Southern Nuclear Imaging Group (SNIG) has provided the highest quality nuclear medicine diagnostic and therapeutic services and Bone Mineral Densitometry continuously since 1985. SNIG Practices regularly upgrade equipment and facilities to guarantee "State of the Art" nuclear medicine practice. The Principals and staff look forward to continuing to provide the highest standard of individualised personal care to your patients into the future.

Our experienced Physicians and staff are: "Your Experts in Nuclear Medicine"

✓ Same day service ✓ Patient Focus ✓ Clinical quality ✓ Accurate Interpretation and Reporting

Nuclear Imaging (Medicine): Function and Physiology..... to aid in your -Day to Day- Patient Management.